



GAT MONTHLY MEMBERSHIP PROGRESS REPORT

Results as of: 6/30/2024

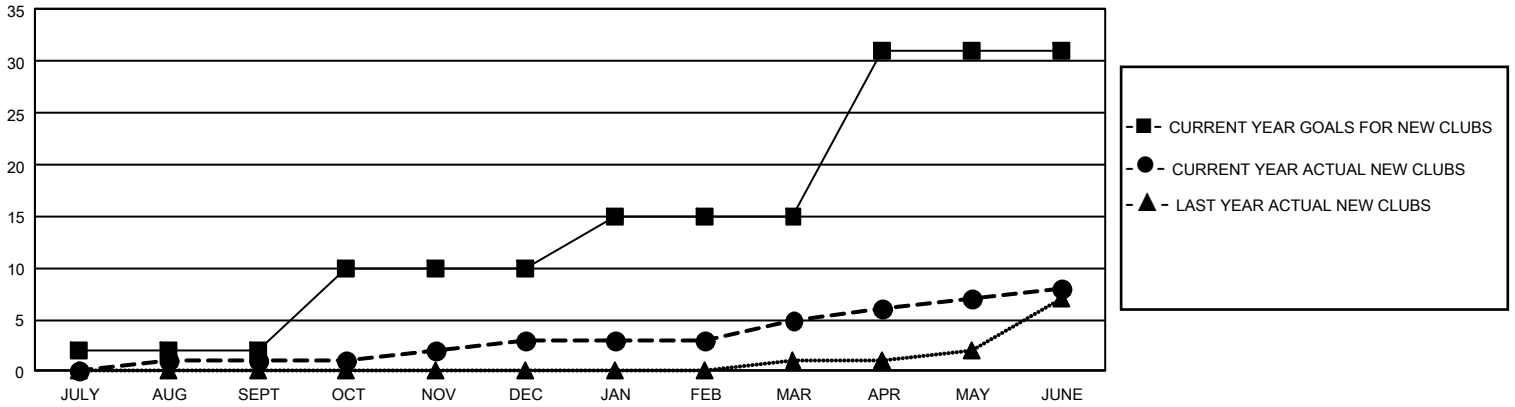
GMT Constitutional Area 1, Group C

REPORT DOES NOT INCLUDE CLUBS IN UNDISTRICTED AREAS.

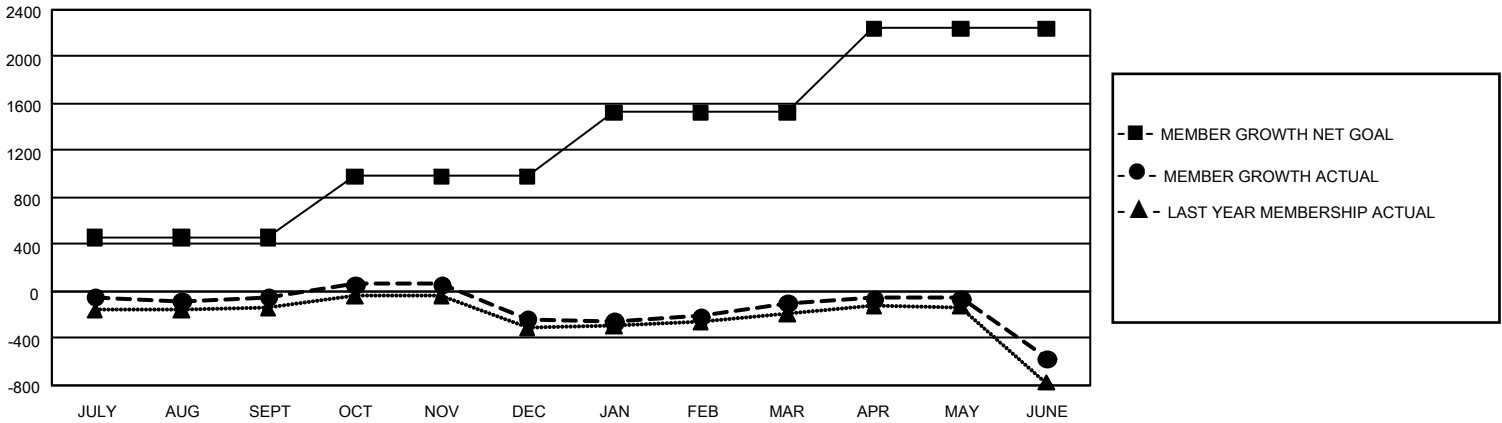
Clubs			
RESULTS FOR 2023-2024			
QUARTER	NEW CLUB GOAL	NEW CLUBS	DROPPED CLUBS
JULY/AUG/SEPT	6	1	4
OCT/NOV/DEC	24	2	3
JAN/FEB/MAR	15	2	1
APR/MAY/JUNE	48	3	5

Members			
RESULTS FOR 2023-2024			
QUARTER	MEMBER GROWTH NET GOAL	MEMBER GROWTH ACTUAL	DROPPED MEMBERS ACTUAL (including transfers)
JULY/AUG/SEPT	455	1,033	987
OCT/NOV/DEC	525	984	1,090
JAN/FEB/MAR	543	1,023	820
APR/MAY/JUNE	719	892	1,294

GOALS AND ACTUAL NEW CLUBS CUMULATIVE



GOALS AND ACTUAL MEMBERS CUMULATIVE



DROPPED CLUBS: 13	946 CLUBS OF 1,407 ADDED 1 OR MORE NEW MEMBERS	<u>GENDER DISTRIBUTION</u>	
		MALE 29,071 (68.62%)	FEMALE 13,275 (31.34%)
<u>DROPPED MEMBERS</u>		NON BINARY 2 (0.00%)	PREFER NOT TO ANSWER 15 (0.04%)
DECEASED 616	CLICK HERE FOR CUMULATIVE MEMBERSHIP DATA	TOTAL FAMILY UNIT MEMBERS 8,715	
CLUB CANCELLED 51		FAMILY MEMBERS PAYING HALF DUES 4,432	
OTHER 3,519			
TOTAL 4,186			